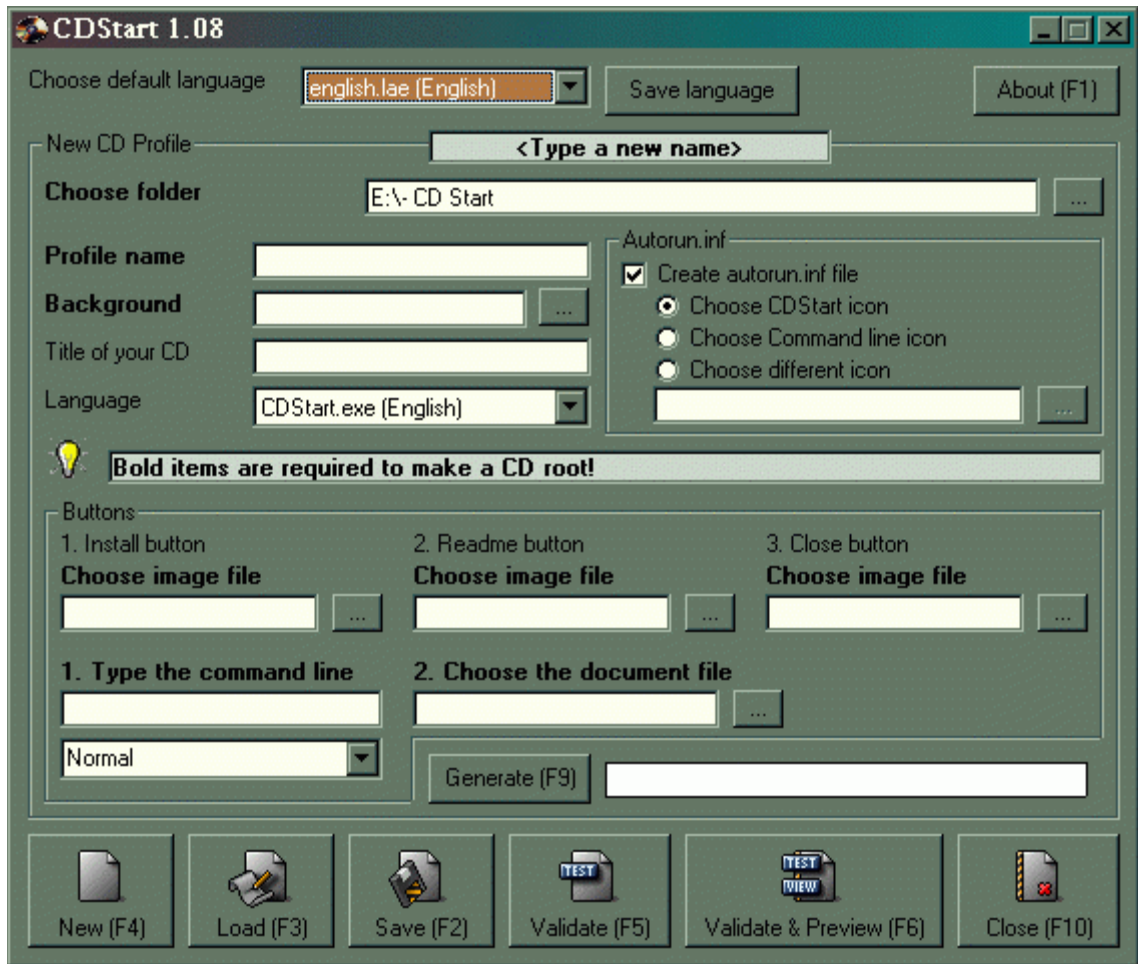


CD Start Utilisation Guide

by Claude Pelletier.



Main Menu

This installation guide introduces you step by step in the installation of CD Start. You will see how to proceed easily for a single installation and for the installation including many softwares.

1. **Choose default language**, means the language of your working menu, the main menu. You can change this language by using the arrow and fix it with the button « Save language ».

Those languages are : Czech, English, French, Polish, Russian, Slovak and Spanish.

2. **New CD Profile** is the name of your backup. This will be done in the CD Start directory.

3. **Choose a folder** to save your menu. That will be your working directory. You must choose an other directory than the one you will create your CD. This is important because the compiler will not accept the same directory.

Create a temporary directory for your work (ex.: C:\tempo, D:\tempo or any other name of your choice) The new directory must be empty.

4. The **Profile name** may be the same of N° 2 or another of your choice.
5. The **Background** is an image .JPEG or JPG with exactly 445 pixels large x 250 pixels high.
6. **Title of your CD** is the line that appears in the image of your presentation. It indicates what your CD is, I mean its utility.
7. Language can change from the menu language depending of the purpose of the CD and the users whom it is made. You choose this with the arrow.
8. Mark the box « Create Autorun.inf file » to create this file which is essential for the autorun of your CD.
9. Choose an icon. You may choose the CD Start icon, a command line icon or a different icon by clicking on the dotted button. One thing to remember: This icon must be 32 x 32.
10. * The « **1. Install Button** » must be an executable file. This is the « setup.exe » or « install.exe » of the software to be installed and you will choose the image « Install.bmp » to go with.
11. * The « **2. Readme Button** » must be a text file such as RTF, DOC or HTML and in this case, you will choose the image « readme.bmp ».
12. The « **3. Close Button** » is use to close installation when this one is completed and you will choose the « close.bmp » button.
13. The « **New (F4)** » button is for a new installation. This button would be chosen when you make an installation for the first time. If you don't choose anything else, this one will be the default button.
14. The « **Load (F3)** » button must be chosen when we want to repeat or copy a previous installation.
15. The « Save (F2) » button is used to make a backup of your present installation.
16. The « **Validate (F5)** » button is used to test and validate your installation program. If this one contains errors, those one will be indicated and you will see exactly where the mistakes are.
17. The « **Validate & Preview (F6)** » does the F5 does and more. If your installation is a success, you will see directly the image of your installation.
18. Thus the option « **Generate (F9)** » button complete your installation if this one is a success. Otherwise you go automatically back to the validate menu (N° 16) to see your errors and correct them.
19. Now you must transfer everything of your temporary working directory into your CD directory, including all subdirectories. You can proceed now to burn your CD.

When your CD will start, you will have an image like the following example:



Installation of only one software

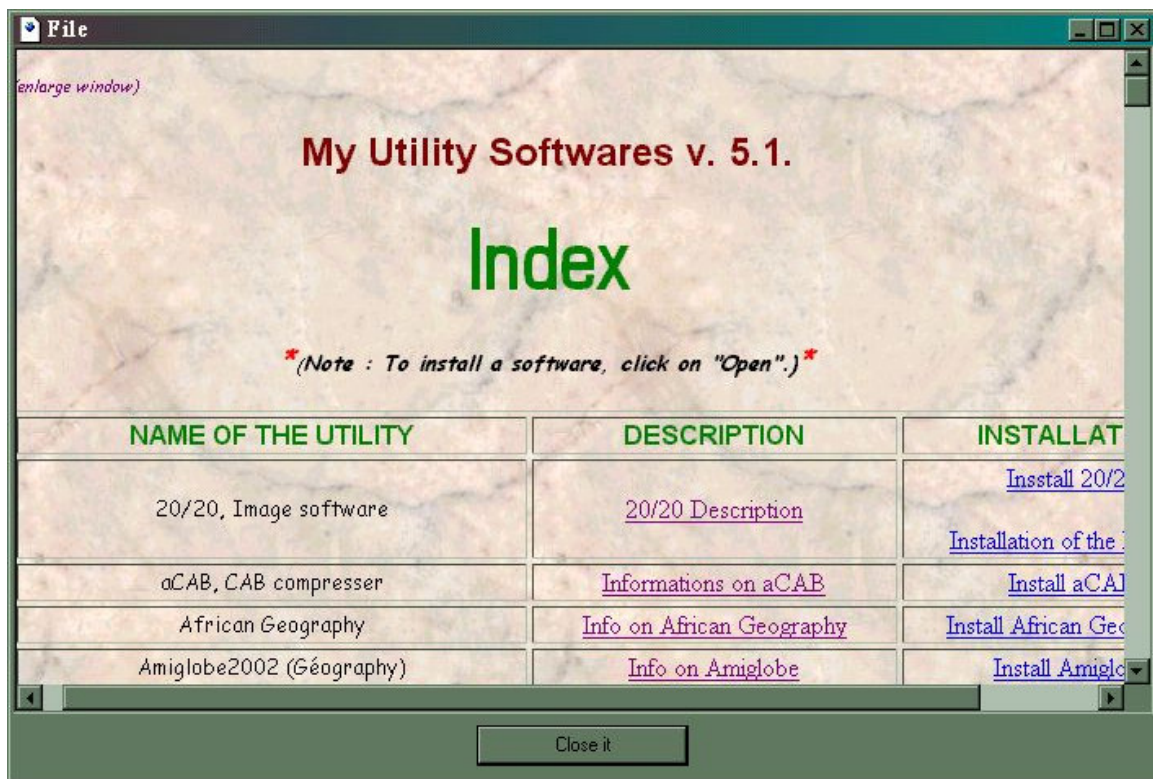
Tips and hints for the installation of many softwares

If you want to burn a CD with many different installations on it, you must thing to the following parameters :

An index including the title with a link for a detailed description and an other link to install the software and an autoexecutable « Readme » text. This text becomes the executable file.

INDEX :

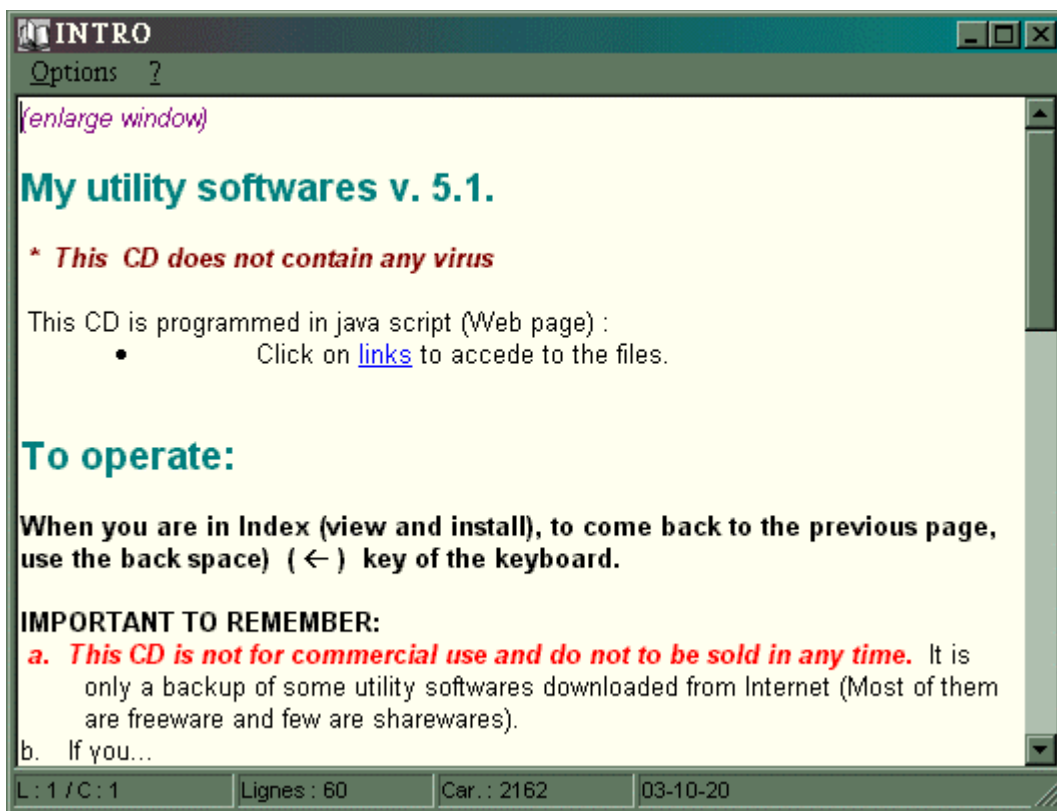
1. You must have an index which includes a list of your programs to be installed.
2. You must be able to proceed separately to the different installations from this index. This principal installation file becomes not an executable file but a text file. For this purpose, we will use a RTF, DOC or HTML format file. Format HTML is the best or if you cannot, use the other ones
3. This index must have [links](#) to click on with the mouse to proceed to the different installations. Those links are associated to executable files such as « install.exe » or « setup.exe » of the softwares to be installed. We can also use this index to give detailed description of the software to be installed.
4. That means that the index will take the natural place of « Readme » (text file) and we will use the « View and install » button (view.bmp)



Index for the installation of many softwares with pertinent informations on each of them.

INTRODUCTION (*Read me*) :

1. The logic way to make this introduction is to proceed with an autoexecutable text (intro.exe) which will start instead of the normal executable file, and we will need to replace the « Install » button by the « Readme » butto.
2. To do this, we absolutely need an autoexecutable text . You will find this freeware easily :
« Auto Text 1.4 » on the Web site of Roger Remblain at: <http://www.memdoc.net/> or <http://move.to/landzone>. We must start with a RTF file. Then, we will have a presentation of the CD with an inage like this one:



Autoexecutable text (intro.exe) Readme

Appearance of the presentation would be like this following example:



Ex.: Presentation image of an installation for many softwares.

Notice the button inversion versus a single installation :

Read me : The executable file « intro.exe »

View and install : The tex file « index.html ».